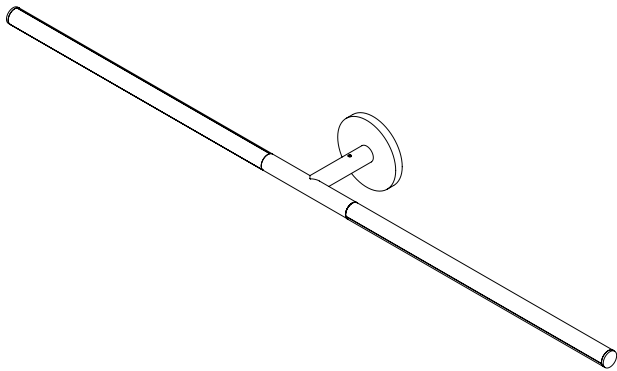


Orbita

Sconce II Installation Instructions

OPTIQUE



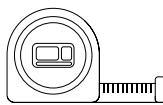
⚠ Important Information

1. These instructions show a typical installation.
2. This product is intended to be mounted on the wall.
3. This product requires a 24V DC Class 2 power supply.

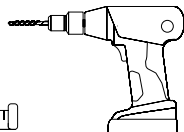
⚙ Required Tools



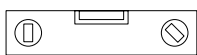
#2 PHILLIPS
SCREWDRIVER



TAPE MEASURE



POWER DRILL



LEVEL BAR



1.5MM ALLEN KEY

✂ Option One: Direct Wire Mount

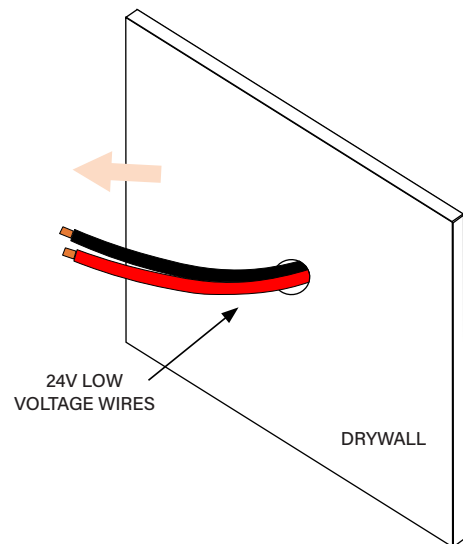
01.

Position the 24V DC Class 2 power supply in a suitable location within 30 feet of the desired fixture location.

NOTE: Longer distances are acceptable when using thicker 12 AWG wire.

02.

Drill 1/2" hole in drywall at the desired location and bring a 24V low-voltage in-wall rated wire through the hole in the wall.



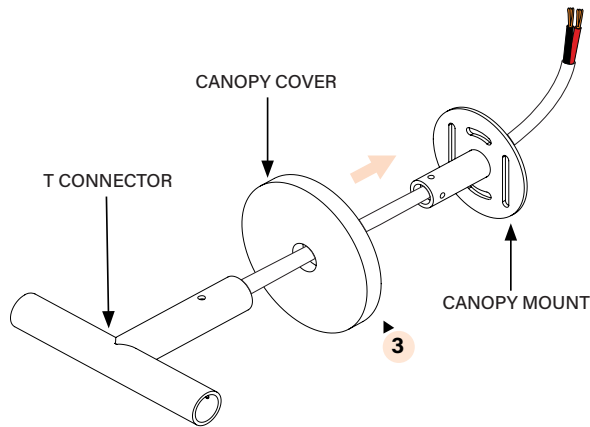
03.

Pre thread the wire from the T connector through the canopy cover and through the canopy mount.

Orbita

Sconce II Installation Instructions

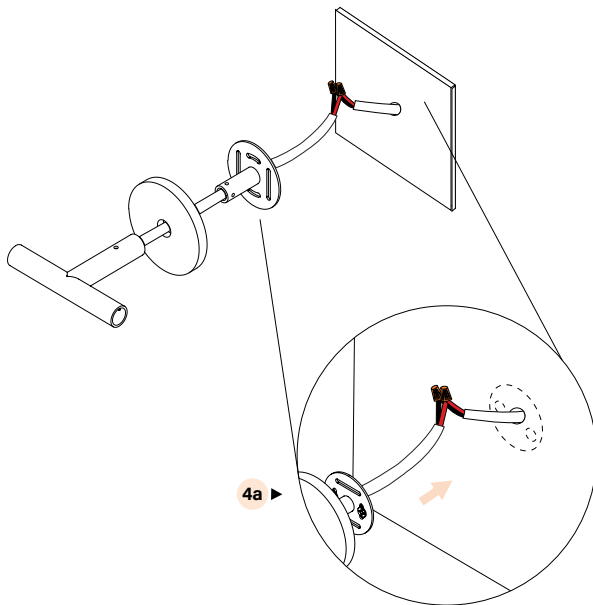
OPTIQUE



04.

Connect a 24V low-voltage wire to the wire lead from the T connector. Red is positive (+) and black is negative (-).

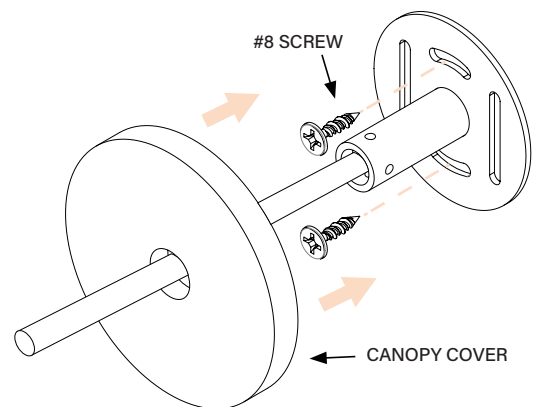
- a. Pass connected low-voltage wires through the drilled hole in drywall.



05.

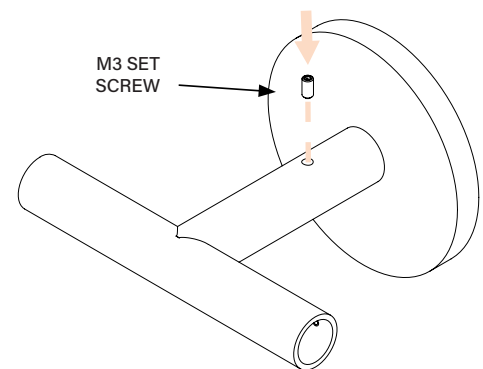
Use two standard #8 wood screws to attach the canopy mount to the wall.

NOTE: Ensure that the threaded hole is facing straight up.



06.

Slide the T connector onto the canopy mount. Choose either a horizontal or vertical orientation. Fasten the T connector to the canopy mount with the M3 set screw.



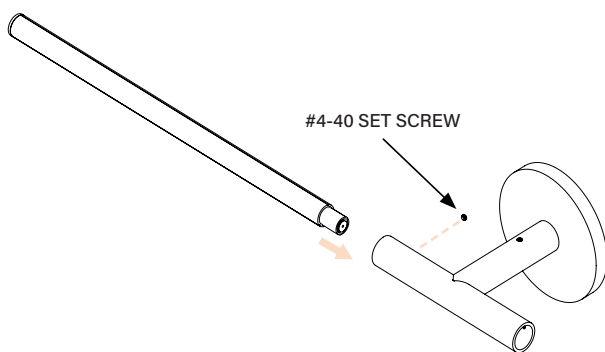
Orbita

Sconce II Installation Instructions

OPTIQUE

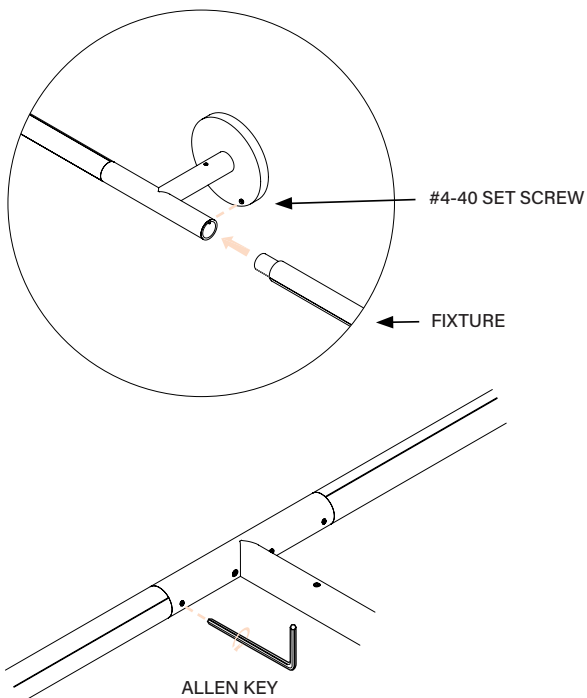
07.

Snap in one fixture into the T connector. Rotate to the desired orientation and then secure with the #4-40 set screw.



08.

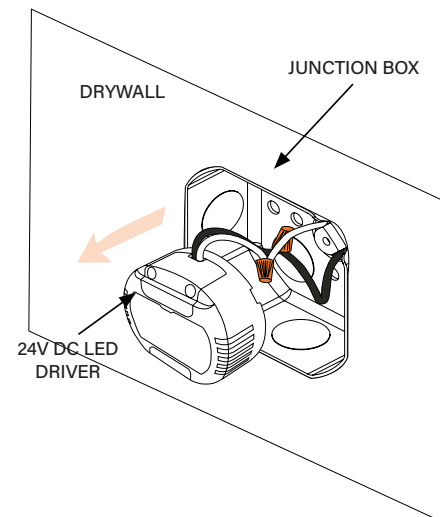
Snap the next fixture into the T connector. Rotate to the desired orientation and then secure with the #4-40 set screw.



Option Two: Junction Box Mount

01.

Install the junction box on the desired location. Either bring 24V low voltage wires to the junction box OR thread AC wires through the junction box and connect to the optional driver as shown below.



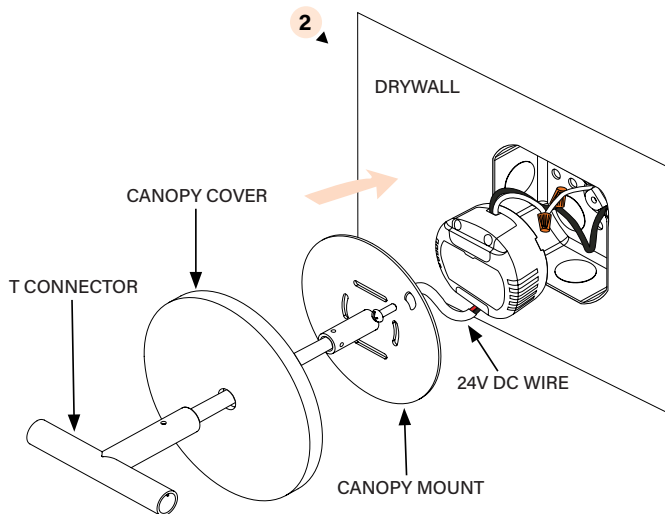
02.

Pre-thread the wire from the T connector through the canopy cover and canopy mount. Connect 24V low-voltage wires. Red is positive (+) and black is negative (-).

Orbita

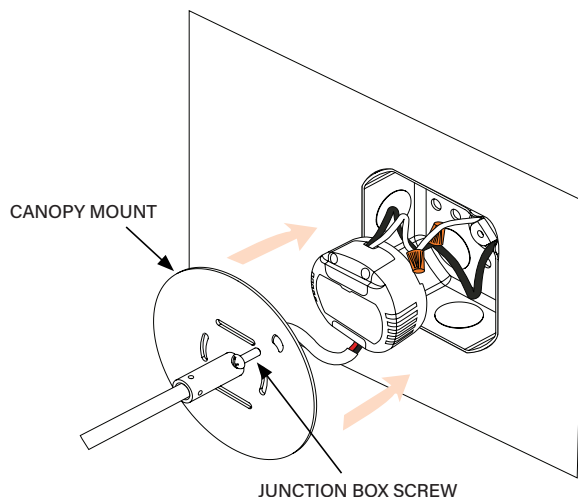
Sconce II Installation Instructions

OPTIQUE



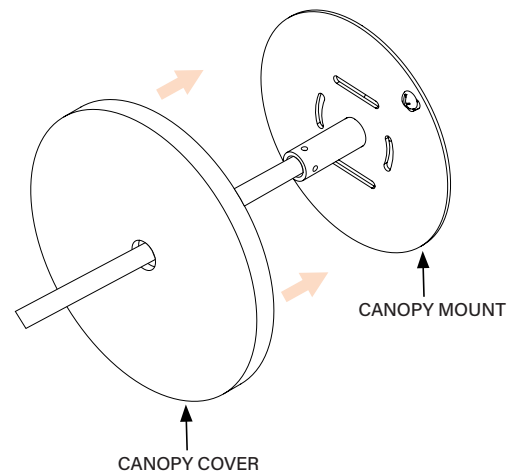
03.

If using the optional driver, place the LED driver and connections into the junction box. Secure the canopy mount to the junction box with the junction box screws.



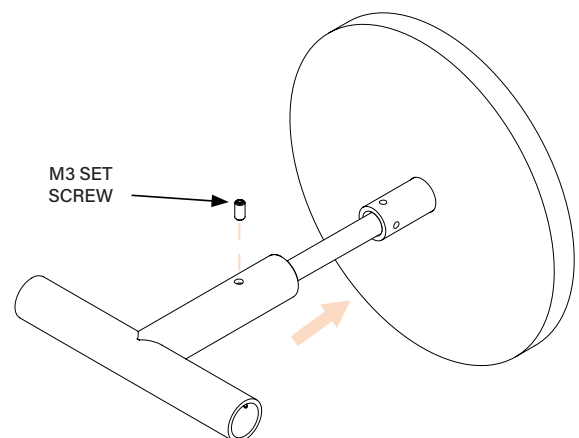
04.

Ensure that the threaded hole is facing straight up. Add the canopy cover to the canopy mount.



05.

Slide the T connector onto the canopy mount. Choose either a horizontal or vertical orientation. Fasten the T connector to the canopy mount with the M3 set screw.



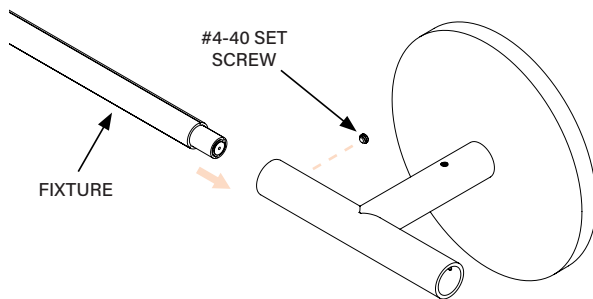
Orbita

Sconce II Installation Instructions

OPTIQUE

06.

Snap in one fixture into the T connector. Rotate to the desired orientation and then secure with the #4-40 set screw.



07.

Snap the next fixture into the T connector. Rotate to the desired orientation and then secure with the #4-40 set screw.

