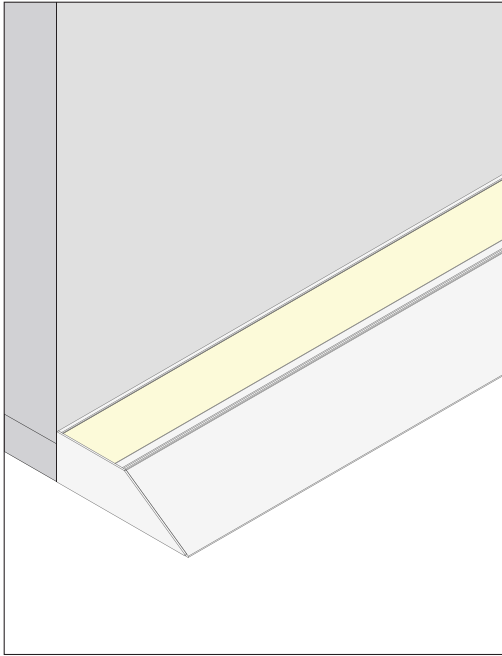


Perifina KnifeEdge 4 in.

Surface Mounted Vanishing Luminaire

OPTIQUE



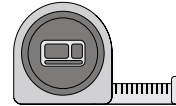
This surface-mounted luminaire features an illuminated reveal that effortlessly creates a vanishing cove effect. Its grooved underside allows for easy mud-in, enabling it to blend seamlessly into any space.



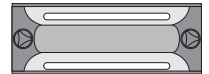
Required Tools



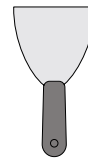
PAINTER'S
TAPE



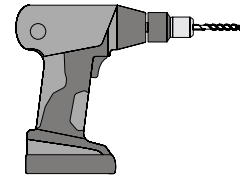
MEASURE TAPE



HAND SANDER



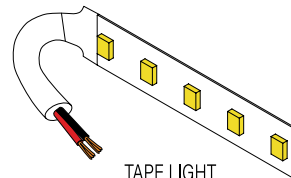
JOINT
KNIFE



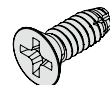
POWER DRILL



Supplied Components



TAPE LIGHT
WITH LEAD WIRE



FLAT HEAD
SCREW

The following items may vary according to the configuration, and will be provided as applicable.



Important Information

1. Suitable for installation in the storage area of a clothes closet in the USA only.
2. This product requires a 24V DC Class 2 power supply.
3. This product can span lengths that are wall-to-wall, can be mitered to fit corners, or be specified in shorter sections for sconce-like applications.

Perifina KnifeEdge 4 in.

Surface Mounted Vanishing Luminaire

OPTIQUE

Surface mounted luminaire Installation steps

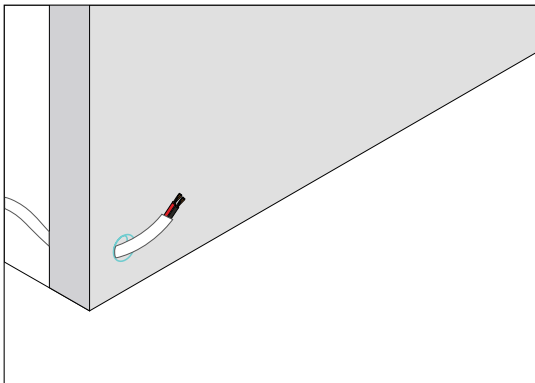
01.

Position the 24V DC Class 2 power supply in a suitable location within 30 feet of the desired fixture location.

NOTE: Longer distances are acceptable when using a thicker 12 AWG wire.

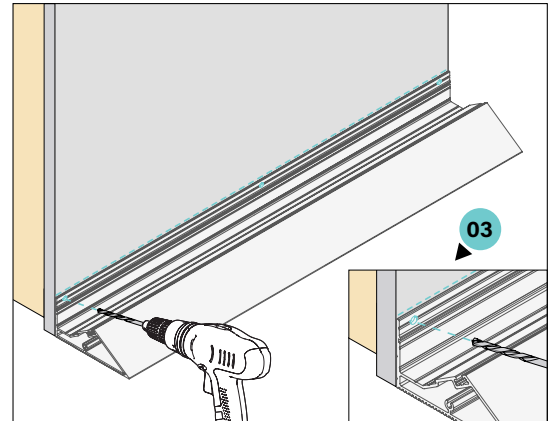
02.

Bring power to a point through the wall that will match the position of the fixture's cable conduit.



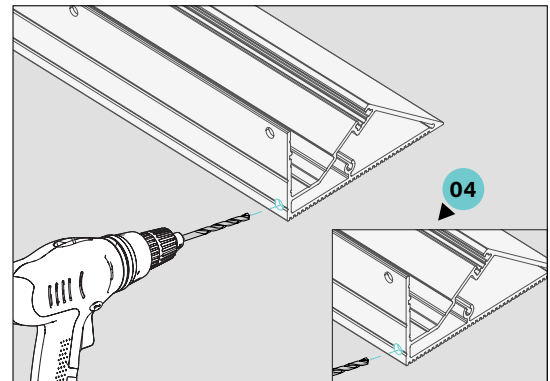
03.

Drill 3/16 in. mounting holes along the drill port in the fixture to match the stud locations in the wall where Perifina KnifeEdge will be mounted. Deburr any sharp edges.



04.

Drill a 1/4 in. hole through the back of the fixture this will be used for the power feed. Deburr any sharp edges.

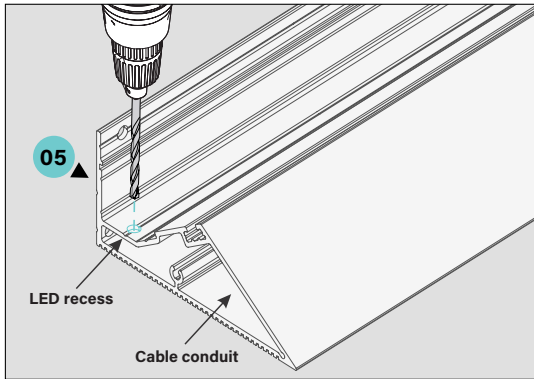


05.

Drill a 11/64 in. hole through the floor of the LED recess into the cable conduit to provide wire access from the LED recess. Deburr any sharp edges. See next image.

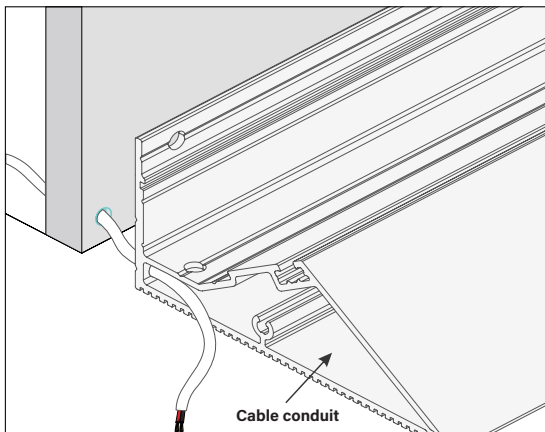
Perifina KnifeEdge 4 in.

Surface Mounted Vanishing Luminaire



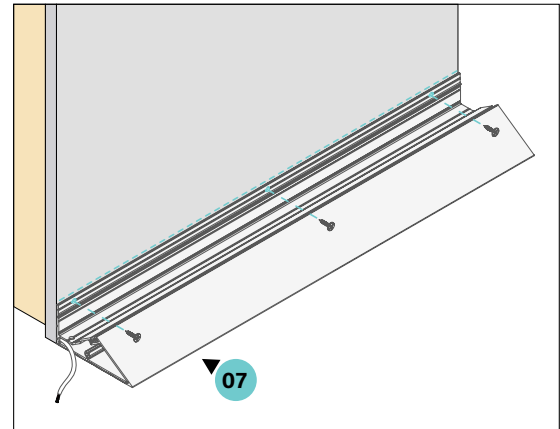
06.

Pass the DC power cable through the 1/4 in. hole on the back into the cable conduit.



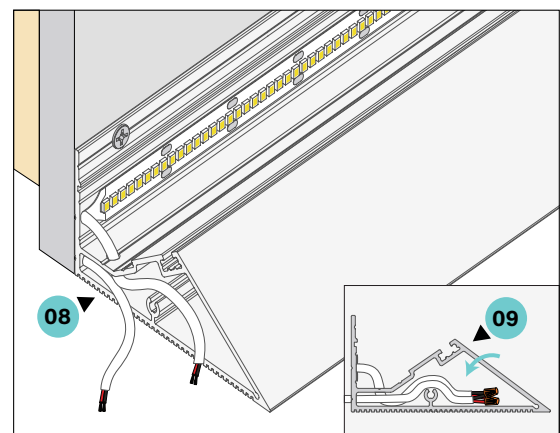
07.

Place the fixture against the drywall panel and secure it with standard drywall screws into the 3/16 in. holes aligned with the stud locations in the wall.



08.

Remove the adhesive backing from the back of the LED tape. Apply the tape where shown. Then pass the lead wire through the 11/64 in. hole into the cable conduit.



09.

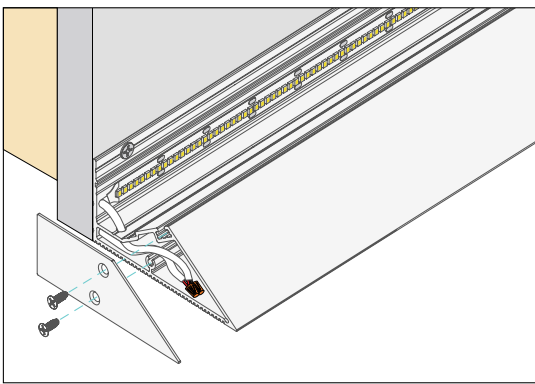
Connect LED tape lead to low-voltage in-wall rated wire. Red is positive (+) and black is negative (-). Place the wires in the cable conduit.

Perifina KnifeEdge 4 in.

Surface Mounted Vanishing Luminaire

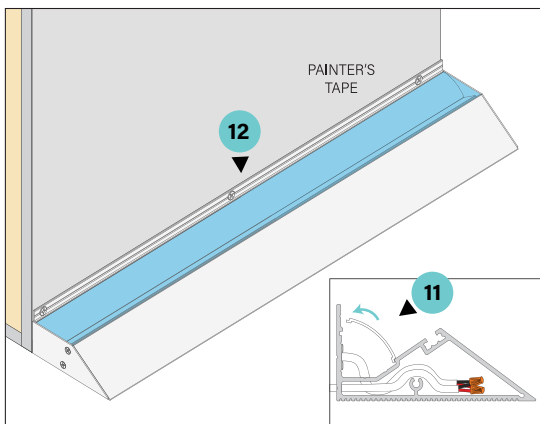
10.

Assemble each end cap at the ends of Perifina KnifeEdge with two flat head screws provided.



11.

Test that the LEDs are working correctly before proceeding, then install the LED diffuser.



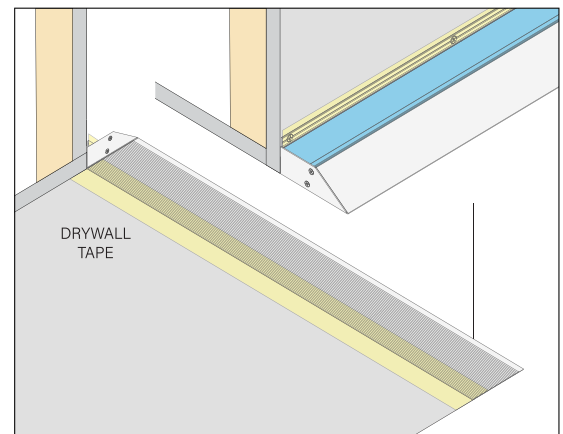
NOTE: End cap not shown on illustration 11.

12.

Cover the inside of the fixture with painter's tape if necessary before plastering, to prevent joint compound and dust from entering.

13.

Apply drywall tape along the edges of the fixture to prevent the joint compound from cracking after installation, and smooth the tape flush.



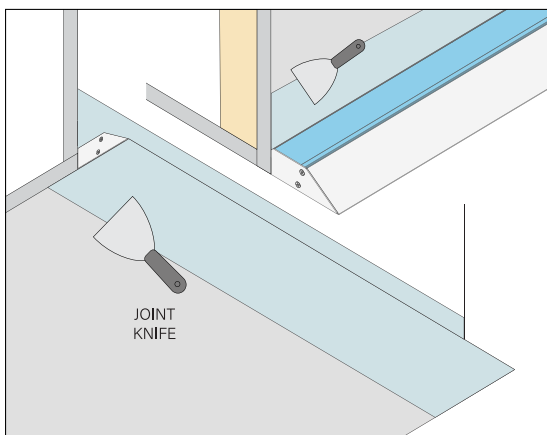
Perifina KnifeEdge 4 in.

Surface Mounted Vanishing Luminaire

OPTIQUE

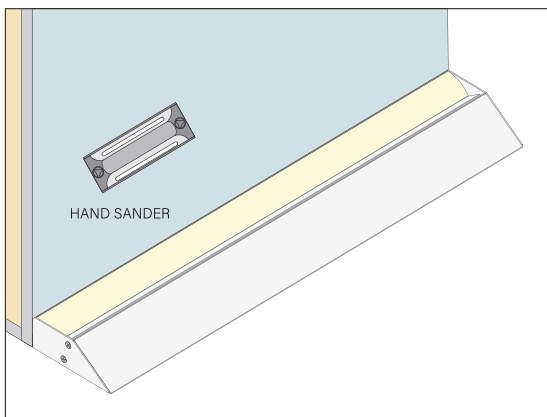
14.

Apply joint compound mud to the mud-in flanges with a joint knife, covering the flanges and screw heads, and smooth the mud joint.



15.

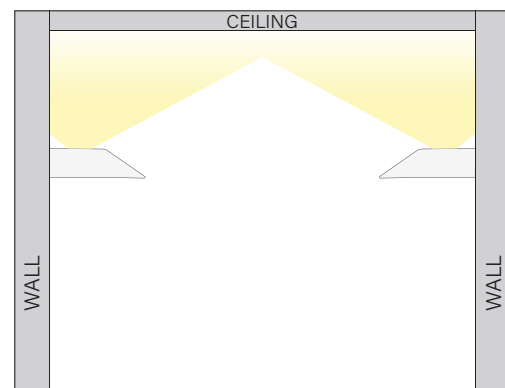
Once dry, use the hand sander to smooth the mud to make a seamless look with the drywall. Then remove the painter's tape.



16.

Paint or finish the wall as desired.
Turn on lights.

Wall mount illustration.



Bulkhead mount illustration.

