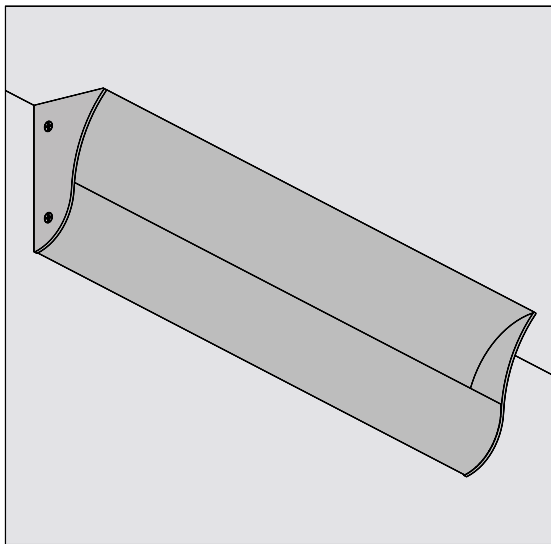


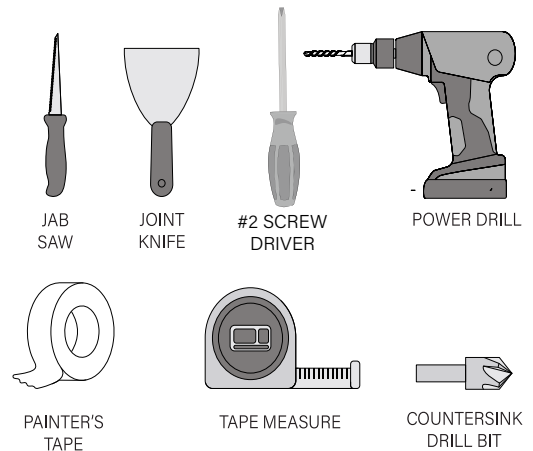
Perifina Cornice 4 in.

Surface Mounted Crown Molding Luminaire

OPTIQUE



Required Tools

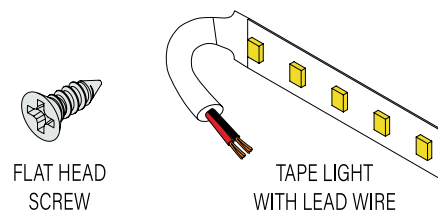


Important Information

1. This product is intended to be mounted on the wall and up to the ceiling.
2. This product requires a 24V DC Class 2 power supply.
3. This product can span lengths that are wall-to-wall, can be mitered to fit corners, or be specified in shorter sections for sconce-like applications.
4. Suitable for installation in the storage area of a clothes closet in the USA only.

Supplied Components

NOTE: The following items may vary according to the configuration.



Perifina Cornice 4 in.

Surface Mounted Crown Molding Luminaire

Surface mounted luminaire Installation steps

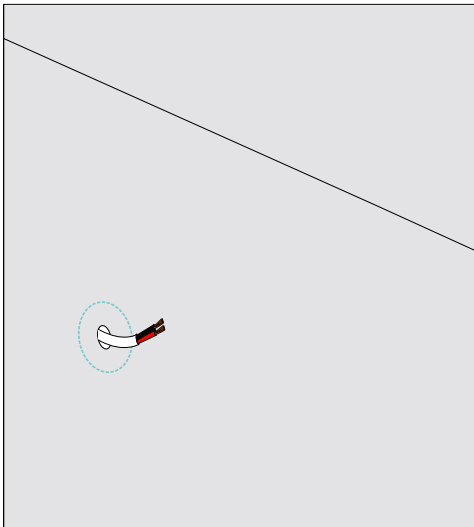
01.

Position the 24V DC Class 2 power supply in a suitable location within 30 feet of the desired fixture location.

NOTE: Longer distances are acceptable when using a thicker 12 AWG wire.

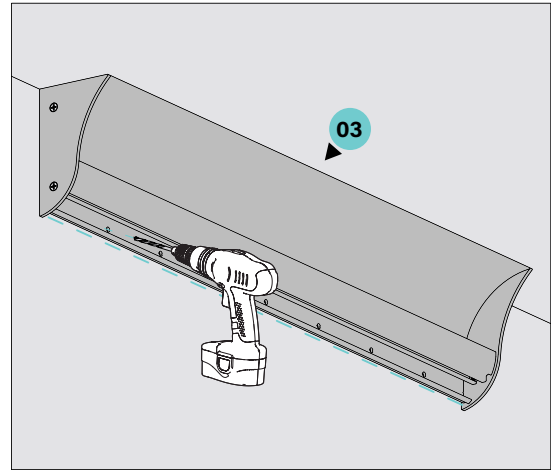
02.

Bring power to a point through the wall that will match the position of the fixture's cable conduit.



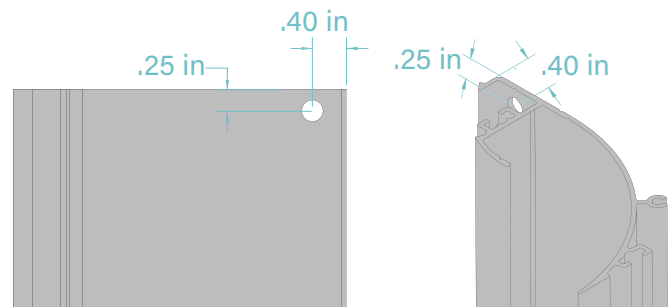
03.

Drill 3/16 in. mounting holes along the drill port in the fixture to match the stud locations in the wall where Perifina Cornice 4in will be mounted. Deburr any sharp edges.



04.

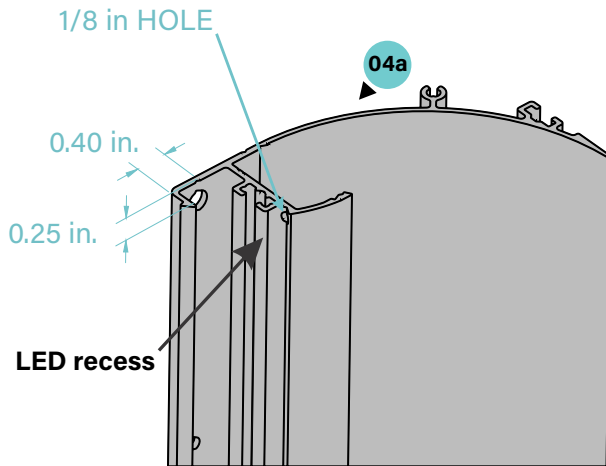
Drill 1/4 in. hole in the back of the Perifina Cornice 4 in. channel at the location indicated below. This hole will be used for a power feed.



- a. Drill a 1/8 inch hole through the floor of the Perifina Cornice 4 in channel into the cable conduit to provide wire access from the LED recess.

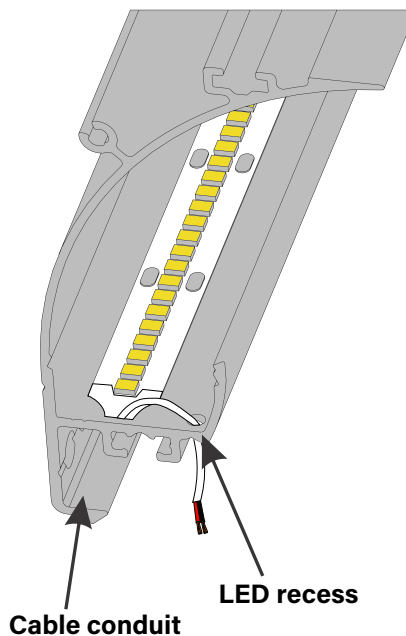
Perifina Cornice 4 in.

Surface Mounted Crown Molding Luminaire



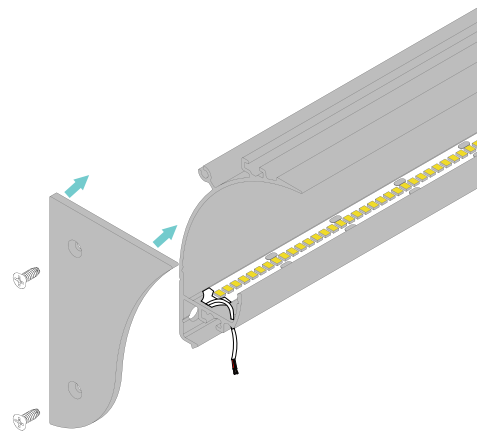
05.

Remove the adhesive protector on the back of the LED tape light. Apply the tape light where indicated below. Pass the lead wire through the 1/8 in hole.



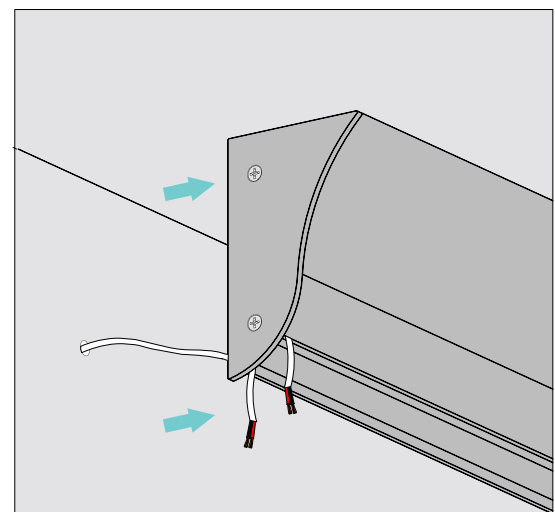
06.

Assemble the end caps with provided Phillips head screws on both ends using a #2 screw driver and remove cover.



07.

Ensure that the DC power cable passes into the designated hole to the cable conduit.

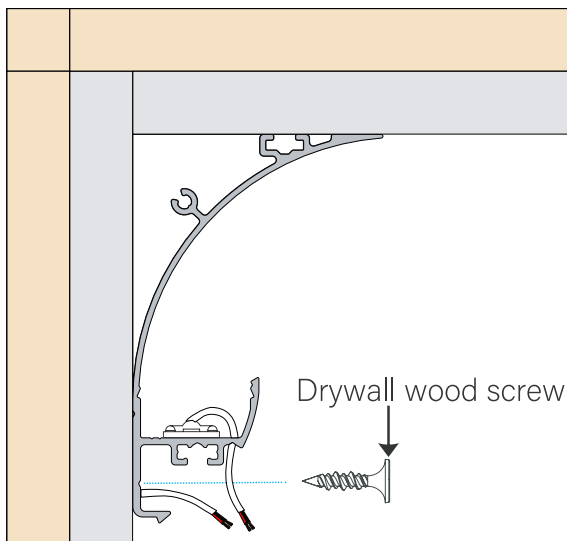


Perifina Cornice 4 in.

Surface Mounted Crown Molding Luminaire

08.

Select your anchoring system: drywall wood screw or #6 or #8 drywall anchor. Use standard drywall screws to fasten the fixture to the studs behind the wall. Properly secure the complete fixture to drywall by screwing through.



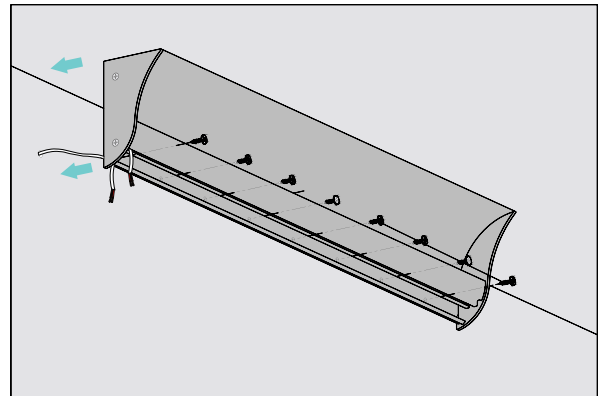
NOTE: End cap not shown

NOTE: Use a stud finder to ensure a safer installation.

NOTE: Drywall anchors may be used, depending on the material of the installation surface, to ensure proper load support and stability.

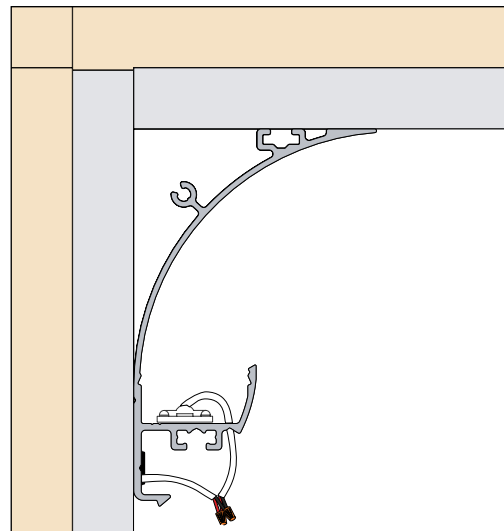
09.

Align the fixture properly to match both channel and drywall hole to manage cables more easily. Make sure Cornice is installed flush at the drywall and ceiling surface.



10.

Connect LED tape lead to low-voltage in wall rated wire. Red is positive (+) and black is negative (-).



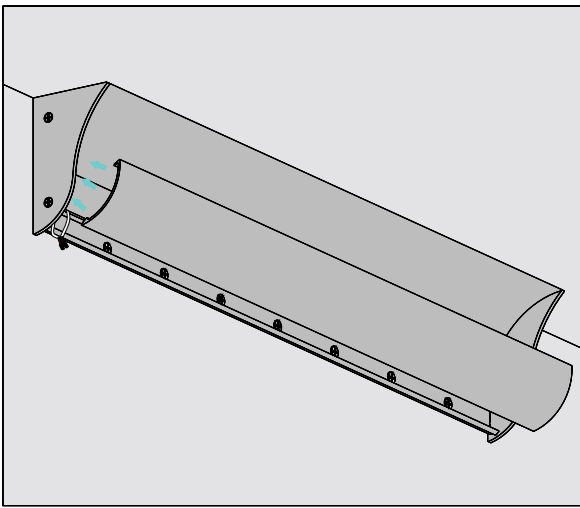
NOTE: End cap not shown

Perifina Cornice 4 in.

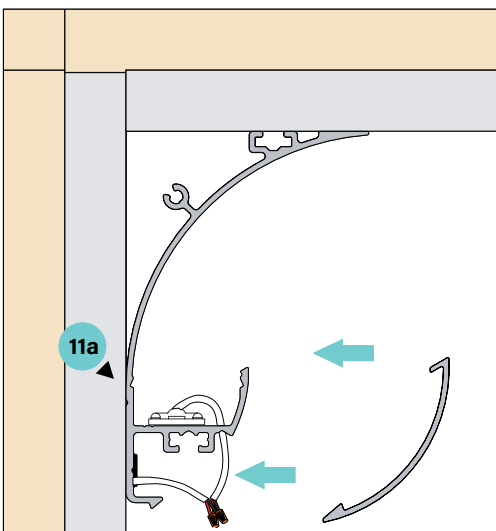
Surface Mounted Crown Molding Luminaire

11.

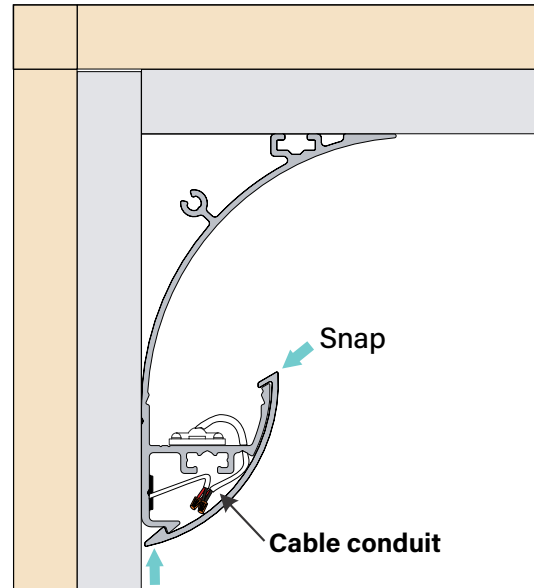
Secure the Cornice cover plate to the Cornice channel by snapping it into the channel grooves.



a. Snap the Cornice cover plate channel into the Cornice channel. Place the cables inside the cable conduit



b. Make sure the Cornice cover plate is secured firmly into the Cornice channel.



12.

Lock lens into the channel by firmly pressing one edge into the profile, then the other. Lock and continue pressing the lens along the fixture until it is fully seated.

