

## Millwork - Recessed - T-Slot - Rockler 26099

### Specification Submittal

Millwork - Recessed - T-Slot - Rockler 26099 is crafted for seamless integration into T-slot grooves made with the Rockler 26099 Router Bit, offering a versatile solution for retail displays, workbenches, and custom applications.

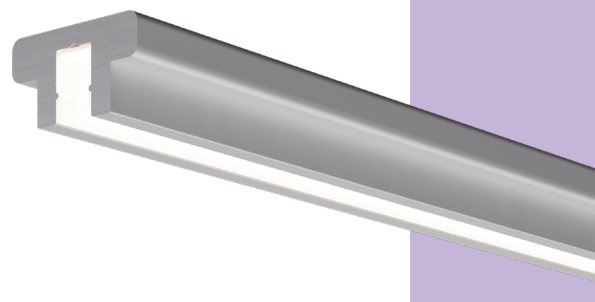


Project Name:

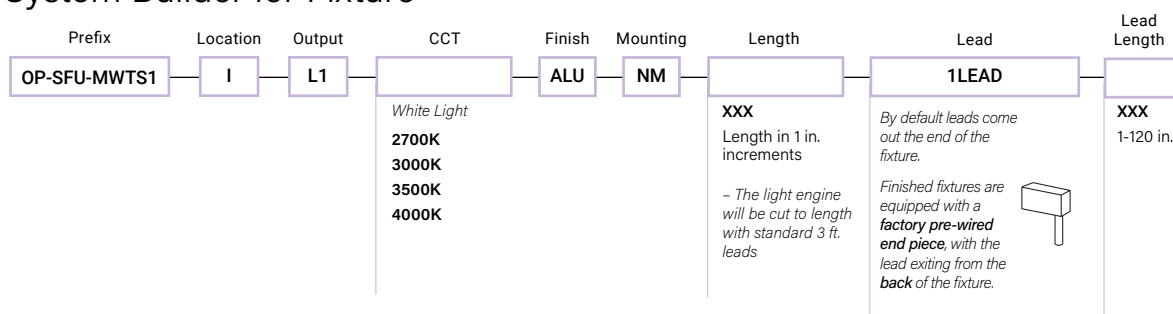
Project Location:

Fixture Type:

SKUs:



### i System Builder for Fixture

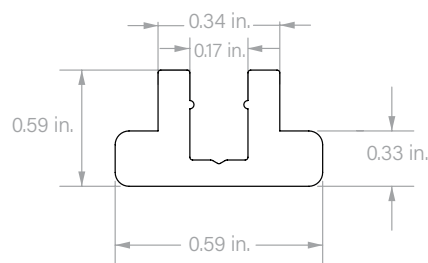


### ⚙️ Features & Benefits

- Complete fixture includes factory pre-wired end piece for easy and fast installation
- Flawless, continuous smooth glow of light with no inconsistencies
- Slides precisely into Rockler 26099 (5/8 in. Dia x 3/16 in. H x 1/2 in. Shank) T-slot grooves, securing itself firmly without requiring adhesives or additional fastening methods
- Retention ridges inside the profile securely hold the light engine in place, ensuring a smooth and straightforward installation
- Create a precise 5/32 in. hole along the V-grooved drill guide for power access exactly where needed, or neatly route wires through the channel's end.
- Optional anodized end caps provide a polished finish, adding a distinctive touch of architectural style. These end caps have a V-groove drill guide for optional power access
- Superior color rendering
- High R9 and R13 values
- 2-step MacAdam ellipse for unparalleled quality and consistency
- Complete UL Listed Luminaire

### ⚙️ Dimensions

#### Fixture Cross Section



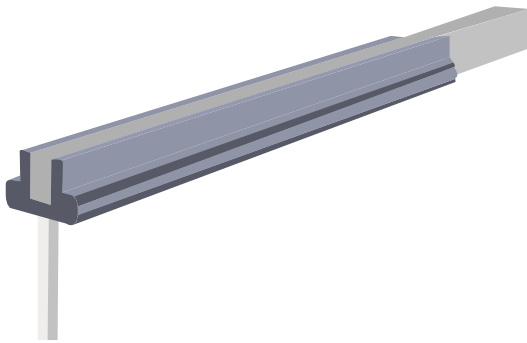
Fixtures are supplied with Optique's remote Universal power supply supporting 0-10, 1-10V, MLV, ELV dimming and voltage input from 100V-277V.

# Millwork - Recessed - T-Slot - Rockler 26099

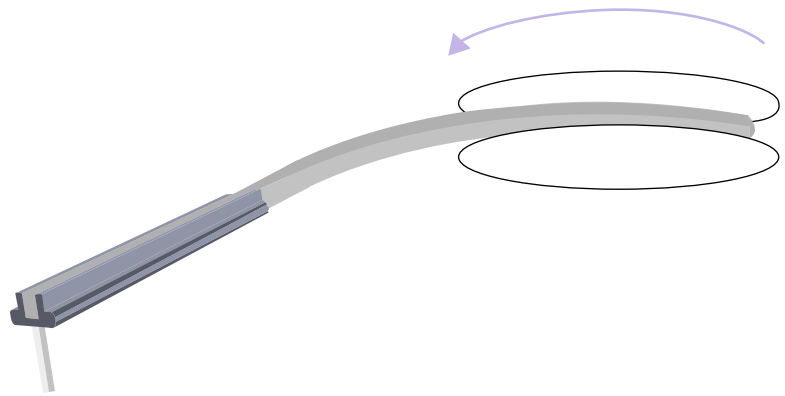
Specification Submittal

## Fixture Configuration Upon Delivery

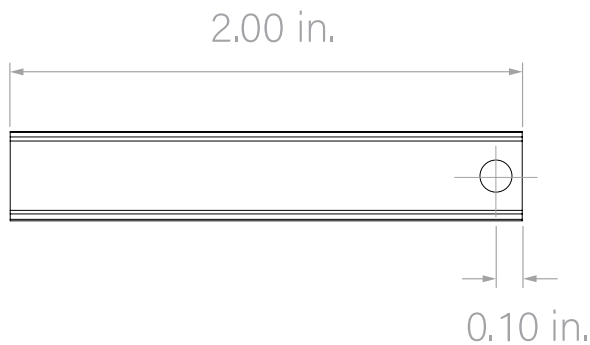
All fixtures are shipped **pre-configured for easy installation**. Each unit includes a **Factory Pre-Wired End Piece**, ensuring a clean and efficient wire management solution. This feature eliminates the need for additional wiring through the channel, allowing for a streamlined installation process.



Factory Pre-Wired End Piece



Light engine roll with Factory Pre-Wired End Piece



Factory Pre-Wired End Piece Back View Dimensions

# Millwork - Recessed - T-Slot - Rockler 26099

Specification Submittal



## Output

Indoor

White Light

L-Level		L1
Lumens (per ft.)	2700K	122
	3000K	123
	3500K	133
	4000K	143
Wattage (per ft.)		3.4
Max Run Length* (ft.)		21.25
Closet Rated		✓

\*Maximum individual fixture per power feed.



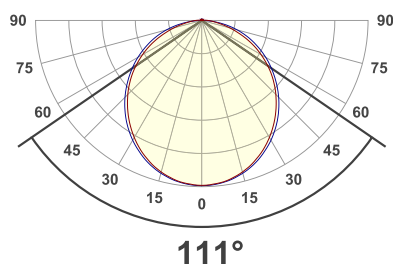
## Photometry

1 ft., 3000K Millwork Surface Mount - 90° Mounting Angle - Fixture

### LUMEN SUMMARY

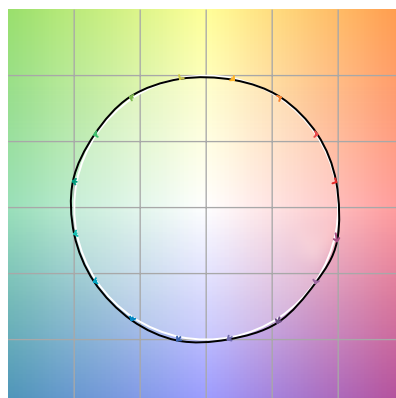
Zone	Lumens	% Fixture
0° - 15°	8.94 lm	7.27%
0° - 30°	32.8 lm	26.66%
0° - 45°	64.2 lm	52.19%
0° - 60°	94.2 lm	76.58%
0° - 75°	115 lm	93.49%
0° - 90°	121 lm	98.37%

### ANGULAR DISTRIBUTION 0 - 90°



### COLOR VECTOR GRAPHIC

		Graphic shifts (%)	
Hue Bin	R <sub>f</sub>	Chroma	Hue
1	97	0%	0%
2	98	1%	-1%
3	96	1%	-1%
4	96	-1%	-2%
5	98	-1%	1%
6	97	2%	1%
7	96	1%	1%
8	95	3%	0%
9	96	2%	0%
10	96	2%	-1%
11	96	2%	0%
12	94	3%	-2%
13	95	1%	-4%
14	94	3%	-4%
15	95	1%	-2%
16	92	2%	-6%



Reference Test



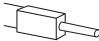
# Millwork - Recessed - T-Slot - Rockler 26099

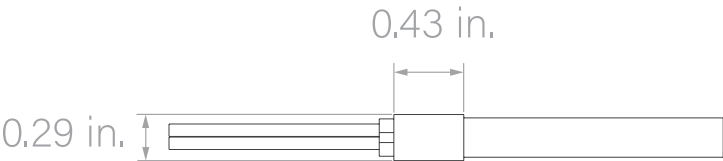
Specification Submittal

**i** System Builder for Channel Only

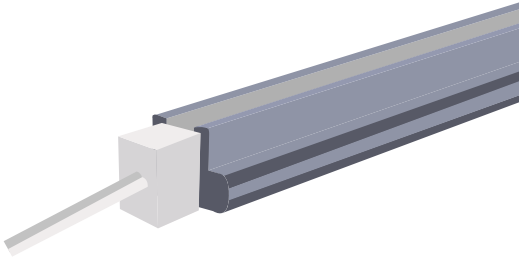
Prefix	End Caps	Finish	Mounting	Length
OP-MWTS1	NA	ALU	NM	<div>XXX Length in 1 in. increments</div>

**i** System Builder for Light Engine Only

Prefix	Location	Output	Voltage	CCT	Length	# of Leads	Lead Length 1	Lead Length 2
OP-01-N04MMSB	O	100	24V	<div>White Light 2700K 3000K 3500K 4000K</div>	<div>XXX Length in 1 in. increments</div>	<div><b>1LEAD</b> One lead </div> <div><b>2LEAD</b> Two leads (one at each end) </div> <div><i>By default leads come out the end of the Light engine as shown in the image</i> </div>	<div>XXX 1-120 in.</div>	<div>XXX 1-120 in. Optional</div>



Light Engine with Sleeve



Light Engine Sleeve stays outside the channel

# Millwork - Recessed - T-Slot - Rockler 26099

Specification Submittal

## Stocked SKU's for Channel

SKU	Description
OP-RMWTS1-NA-ALU-NM-48	Millwork - Recessed - TSlot - Rockler 26099, 5/8 in. Dia x 3/1 in. H x 1/2 in. Shank, Anodized Aluminum Finish, 48 in. length

## Stock SKU's for Light Engine

SKU	Description
OP-01-N04MMSB-O-100LM-24V-2700K-25	25 in. NanoNeon - 100 Lumens per foot - 2700K - 24V
OP-01-N04MMSB-O-100LM-24V-3000K-25	25 in. NanoNeon - 100 Lumens per foot - 3000K - 24V
OP-01-N04MMSB-O-100LM-24V-3500K-25	25 in. NanoNeon - 100 Lumens per foot - 3500K - 24V
OP-01-N04MMSB-O-100LM-24V-4000K-25	25 in. NanoNeon - 100 Lumens per foot - 4000K - 24V
OP-01-N04MMSB-O-100LM-24V-2700K-37	37 in. NanoNeon - 100 Lumens per foot - 2700K - 24V
OP-01-N04MMSB-O-100LM-24V-3000K-37	37 in. NanoNeon - 100 Lumens per foot - 3000K - 24V
OP-01-N04MMSB-O-100LM-24V-3500K-37	37 in. NanoNeon - 100 Lumens per foot - 3500K - 24V
OP-01-N04MMSB-O-100LM-24V-4000K-37	37 in. NanoNeon - 100 Lumens per foot - 4000K - 24V
OP-01-N04MMSB-O-100LM-24V-2700K-48	48 in. NanoNeon - 100 Lumens per foot - 2700K - 24V
OP-01-N04MMSB-O-100LM-24V-3000K-48	48 in. NanoNeon - 100 Lumens per foot - 3000K - 24V
OP-01-N04MMSB-O-100LM-24V-3500K-48	48 in. NanoNeon - 100 Lumens per foot - 3500K - 24V
OP-01-N04MMSB-O-100LM-24V-4000K-48	48 in. NanoNeon - 100 Lumens per foot - 4000K - 24V
OP-01-N04MMSB-O-100LM-24V-2700K-97	97 in. NanoNeon - 100 Lumens per foot - 2700K - 24V
OP-01-N04MMSB-O-100LM-24V-3000K-97	97 in. NanoNeon - 100 Lumens per foot - 3000K - 24V
OP-01-N04MMSB-O-100LM-24V-3500K-97	97 in. NanoNeon - 100 Lumens per foot - 3500K - 24V
OP-01-N04MMSB-O-100LM-24V-4000K-97	97 in. NanoNeon - 100 Lumens per foot - 4000K - 24V
OP-01-N04MMSB-O-100LM-24V-2700K-125	125 in. NanoNeon - 100 Lumens per foot - 2700K - 24V
OP-01-N04MMSB-O-100LM-24V-3000K-125	125 in. NanoNeon - 100 Lumens per foot - 3000K - 24V
OP-01-N04MMSB-O-100LM-24V-3500K-125	125 in. NanoNeon - 100 Lumens per foot - 3500K - 24V
OP-01-N04MMSB-O-100LM-24V-4000K-125	125 in. NanoNeon - 100 Lumens per foot - 4000K - 24V
OP-01-N04MMSB-O-100LM-24V-2700K-196	1 spool of 16.4 ft. NanoNeon - 100 Lumens per foot - 2700K - 24V
OP-01-N04MMSB-O-100LM-24V-3000K-196	1 spool of 16.4 ft. NanoNeon - 100 Lumens per foot - 3000K - 24V
OP-01-N04MMSB-O-100LM-24V-3500K-196	1 spool of 16.4 ft. NanoNeon - 100 Lumens per foot - 3500K - 24V
OP-01-N04MMSB-O-100LM-24V-4000K-196	1 spool of 16.4 ft. NanoNeon - 100 Lumens per foot - 4000K - 24V