

## Millwork - Surface Mount - 45° Mounting Angle

### Specification Submittal

Millwork - Surface Mount - 45° Mounting Angle is designed for woodwork and millwork applications. This innovative luminaire seamlessly integrates into the underside of shelves, counters, and desks. Its angled profile directs light with precision within the shelf or cabinet, while the front lip blends effortlessly with the shelf edge, creating a discreet, low-visibility installation. Engineered for effortless installation with a V-groove drill guide for power access and retention ridges that securely hold the light engine in place.

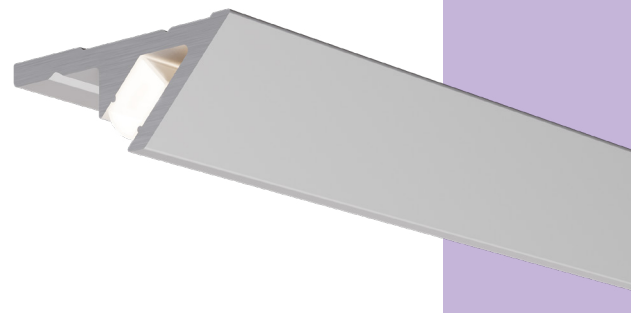


Project Name:

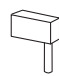
Project Location:

Fixture Type:

SKUs:



### i System Builder for Fixture

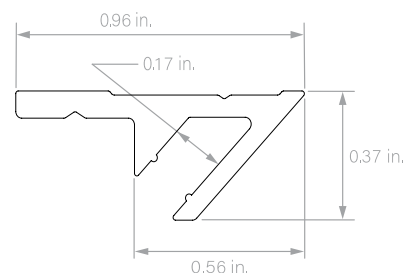
Prefix	Location	Output	CCT	Finish	Mounting	Length	Lead	Lead Length
OP-SFU-MW45	I	L1	White Light 2700K 3000K 3500K 4000K	ALU	<b>VHB</b> 3M VHB Adhesive - <i>double sided tape is mounted on the back</i>  <b>SC</b> #6 wood screws  <b>NM</b> No Mounts - <i>installer can use own adhesive</i>	<b>XXX</b> Length in 1 in. increments	<b>1LEAD</b>  <i>By default leads come out the end of the fixture.</i>  <i>Finished fixtures are equipped with a <b>factory pre-wired end piece</b>, with the lead exiting from the <b>back</b> of the fixture.</i> 	<b>XXX</b> 1-120 in.

### ⚙️ Features & Benefits

- Complete fixture includes factory pre-wired end piece for easy and fast installation
- Flawless, continuous smooth glow of light with no inconsistencies
- The front lip sits flush with the shelf's edge, and its angled profile subtly conceals the channel from view
- Retention ridges inside the profile securely hold the light engine in place, ensuring a smooth and straightforward installation
- Mount effortlessly with high-strength VHB tape or #6 wood screws, utilizing the V-grooved drill guide for accurate positioning
- Create a precise 5/32 in. hole along the V-grooved drill guide for power access exactly where needed, or neatly route wires through the channel's end.
- Superior color rendering
- High R9 and R13 values
- 2-step MacAdam ellipse for unparalleled quality and consistency
- Complete UL Listed Luminaire

### ⚙️ Dimensions

#### Fixture Cross Section



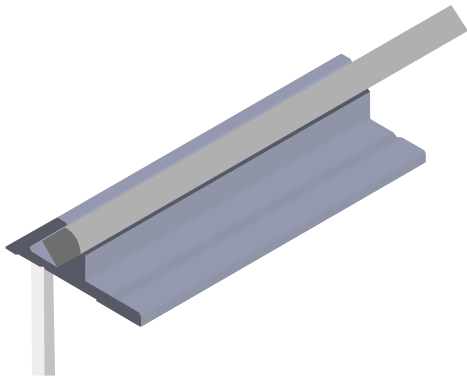
Fixtures are supplied with Optique's remote Universal power supply supporting 0-10, 1-10V, MLV, ELV dimming and voltage input from 100V-277V.

# Millwork - Surface Mount - 45° Mounting Angle

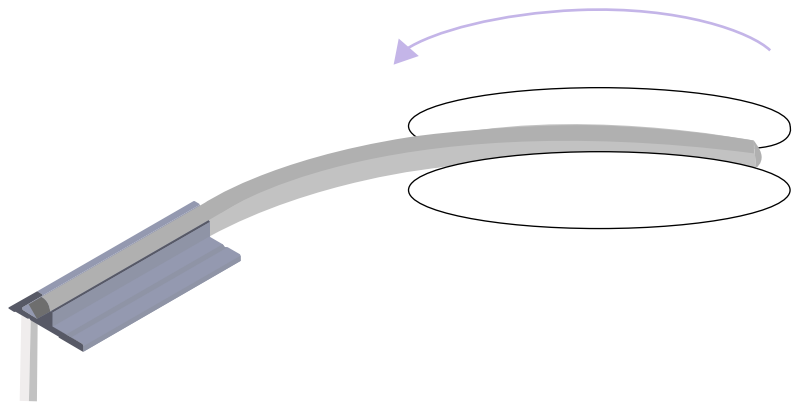
Specification Submittal

## i Fixture Configuration Upon Delivery

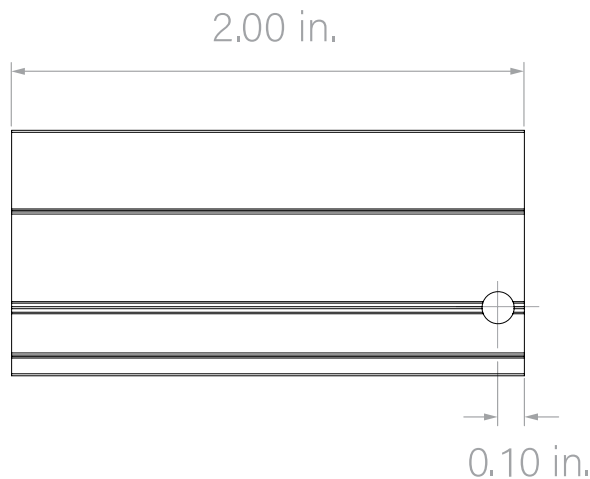
All fixtures are shipped **pre-configured for easy installation**. Each unit includes a **Factory Pre-Wired End Piece**, ensuring a clean and efficient wire management solution. This feature eliminates the need for additional wiring through the channel, allowing for a streamlined installation process.



Factory Pre-Wired End Piece



Light engine roll with Factory Pre-Wired End Piece



Factory Pre-Wired End Piece Back View Dimensions

# Millwork - Surface Mount - 45° Mounting Angle

Specification Submittal



## Output

Indoor

White Light

L-Level		L1
Lumens (per ft.)	2700K	122
	3000K	123
	3500K	133
	4000K	143
Wattage (per ft.)		3.4
Max Run Length* (ft.)		21.25
Closet Rated		✓

\*Maximum individual fixture per power feed.



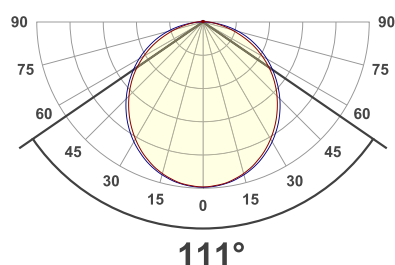
## Photometry

1 ft., 3000K Millwork - Surface Mount - 45° Mounting Angle - Fixture

### LUMEN SUMMARY

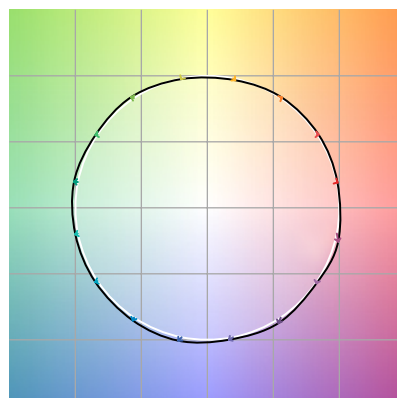
Zone	Lumens	% Fixture
0° - 15°	8.94 lm	7.27%
0° - 30°	32.8 lm	26.66%
0° - 45°	64.2 lm	52.19%
0° - 60°	94.2 lm	76.58%
0° - 75°	115 lm	93.49%
0° - 90°	121 lm	98.37%

### ANGULAR DISTRIBUTION 0 - 90°



### COLOR VECTOR GRAPHIC

		Graphic shifts (%)	
Hue Bin	R <sub>f</sub>	Chroma	Hue
1	97	0%	0%
2	98	1%	-1%
3	96	1%	-1%
4	96	-1%	-2%
5	98	-1%	1%
6	97	2%	1%
7	96	1%	1%
8	95	3%	0%
9	96	2%	0%
10	96	2%	-1%
11	96	2%	0%
12	94	3%	-2%
13	95	1%	-4%
14	94	3%	-4%
15	95	1%	-2%
16	92	2%	-6%



Reference Test




## Millwork - Surface Mount - 45° Mounting Angle

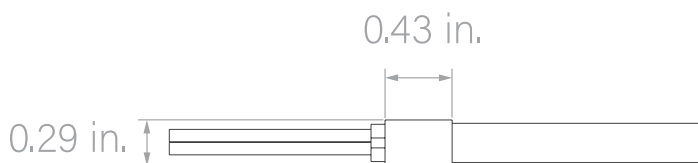
Specification Submittal

### i System Builder for Channel Only

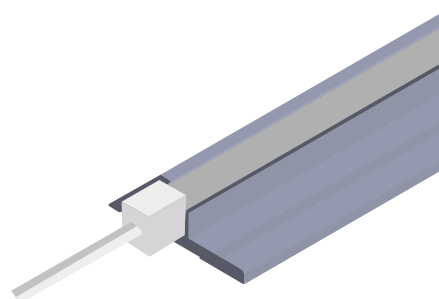
Prefix	End Caps	Finish	Mounting	Length
OP-SMW45	NA	ALU	<b>VHB</b> 3M VHB Adhesive - <i>double sided tape is mounted on the back</i>  <b>SC</b> #6 wood screws  <b>NM</b> No Mounts - <i>installer can use own adhesive</i>	<b>XXX</b> Length in 1 in. increments

### i System Builder for Light Engine Only

Prefix	Location	Output	Voltage	CCT	Length	# of Leads	Lead Length 1	Lead Length 2
OP-01-N04MMSB	O	100	24V	White Light <b>2700K</b> <b>3000K</b> <b>3500K</b> <b>4000K</b>	<b>XXX</b> Length in 1 in. increments	<b>1LEAD</b> One lead   <b>2LEAD</b> Two leads (one at each end)   <i>By default leads come out the end of the Light engine as shown in the image</i> 	<b>XXX</b> 1-120 in.	<b>XXX</b> 1-120 in. Optional



Light Engine with Sleeve



Light Engine Sleeve stays outside the channel

# Millwork - Surface Mount - 45° Mounting Angle

Specification Submittal

## Stock SKU's for Channel

SKU	Description
OP-SMW45-NA-ALU-NM-48	Millwork - Surface Mount - 45 Degree Mounting Angle, Anodized Aluminum Finish, 48 in. length

## Stock SKU's for Light Engine

SKU	Description
OP-01-N04MMSB-O-100LM-24V-2700K-25	25 in. NanoNeon - 100 Lumens per foot - 2700K - 24V
OP-01-N04MMSB-O-100LM-24V-3000K-25	25 in. NanoNeon - 100 Lumens per foot - 3000K - 24V
OP-01-N04MMSB-O-100LM-24V-3500K-25	25 in. NanoNeon - 100 Lumens per foot - 3500K - 24V
OP-01-N04MMSB-O-100LM-24V-4000K-25	25 in. NanoNeon - 100 Lumens per foot - 4000K - 24V
OP-01-N04MMSB-O-100LM-24V-2700K-37	37 in. NanoNeon - 100 Lumens per foot - 2700K - 24V
OP-01-N04MMSB-O-100LM-24V-3000K-37	37 in. NanoNeon - 100 Lumens per foot - 3000K - 24V
OP-01-N04MMSB-O-100LM-24V-3500K-37	37 in. NanoNeon - 100 Lumens per foot - 3500K - 24V
OP-01-N04MMSB-O-100LM-24V-4000K-37	37 in. NanoNeon - 100 Lumens per foot - 4000K - 24V
OP-01-N04MMSB-O-100LM-24V-2700K-48	48 in. NanoNeon - 100 Lumens per foot - 2700K - 24V
OP-01-N04MMSB-O-100LM-24V-3000K-48	48 in. NanoNeon - 100 Lumens per foot - 3000K - 24V
OP-01-N04MMSB-O-100LM-24V-3500K-48	48 in. NanoNeon - 100 Lumens per foot - 3500K - 24V
OP-01-N04MMSB-O-100LM-24V-4000K-48	48 in. NanoNeon - 100 Lumens per foot - 4000K - 24V
OP-01-N04MMSB-O-100LM-24V-2700K-97	97 in. NanoNeon - 100 Lumens per foot - 2700K - 24V
OP-01-N04MMSB-O-100LM-24V-3000K-97	97 in. NanoNeon - 100 Lumens per foot - 3000K - 24V
OP-01-N04MMSB-O-100LM-24V-3500K-97	97 in. NanoNeon - 100 Lumens per foot - 3500K - 24V
OP-01-N04MMSB-O-100LM-24V-4000K-97	97 in. NanoNeon - 100 Lumens per foot - 4000K - 24V
OP-01-N04MMSB-O-100LM-24V-2700K-125	125 in. NanoNeon - 100 Lumens per foot - 2700K - 24V
OP-01-N04MMSB-O-100LM-24V-3000K-125	125 in. NanoNeon - 100 Lumens per foot - 3000K - 24V
OP-01-N04MMSB-O-100LM-24V-3500K-125	125 in. NanoNeon - 100 Lumens per foot - 3500K - 24V
OP-01-N04MMSB-O-100LM-24V-4000K-125	125 in. NanoNeon - 100 Lumens per foot - 4000K - 24V
OP-01-N04MMSB-O-100LM-24V-2700K-196	1 spool of 16.4 ft. NanoNeon - 100 Lumens per foot - 2700K - 24V
OP-01-N04MMSB-O-100LM-24V-3000K-196	1 spool of 16.4 ft. NanoNeon - 100 Lumens per foot - 3000K - 24V
OP-01-N04MMSB-O-100LM-24V-3500K-196	1 spool of 16.4 ft. NanoNeon - 100 Lumens per foot - 3500K - 24V
OP-01-N04MMSB-O-100LM-24V-4000K-196	1 spool of 16.4 ft. NanoNeon - 100 Lumens per foot - 4000K - 24V