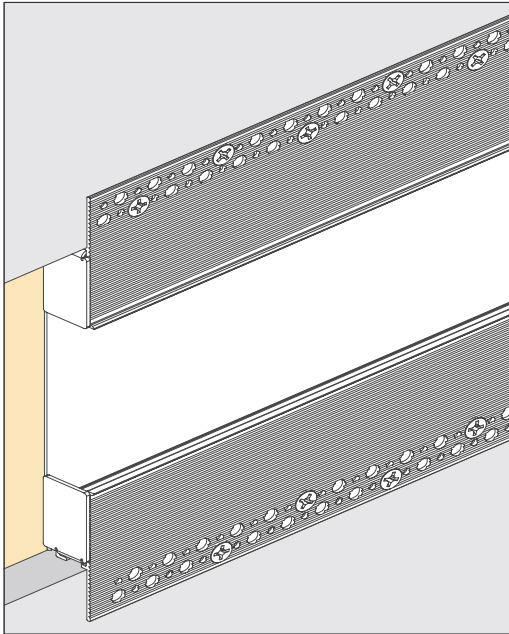


Perifina Wall Reveal 3 & 4 in.

Recessed Mud-In Wall Cove Luminaire

OPTIQUE

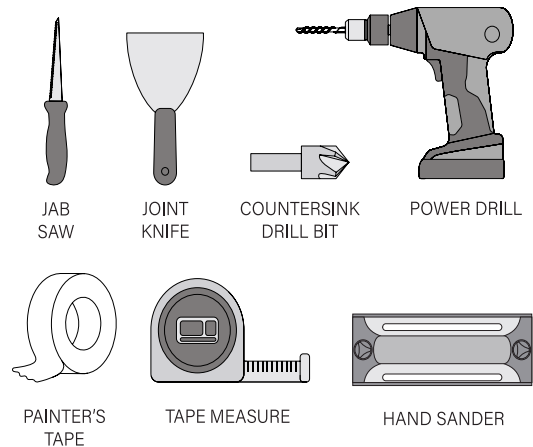


Provides the ability to create a niche effect in a wall to provide not only an accent light, but also an enhanced textured element to the wall. Can easily go around corners without light gaps.

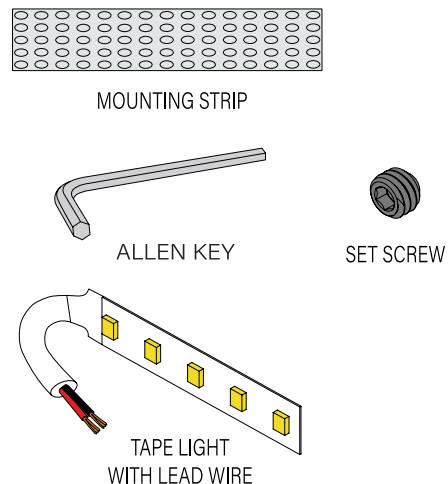
Important Information

1. Product compatible with 5/8 inch drywall. Ensure that the product you are using is compatible with your drywall thickness.
2. This product requires a 24V DC Class 2 power supply.
3. Use the larger screw hole to attach the LED channel to the drywall instead of the smaller screw holes.
4. Be careful not to over-tighten the screws; tighten them just enough to secure the channel without compressing it.
5. This product can span lengths that are wall-to-wall, or be specified in shorter sections for sconce-like applications.

Required Tools



Supplied Components



The following items may vary according to the configuration, and will be provided as applicable.

Perifina Wall Reveal 3 & 4 in.

Recessed Mud-In Wall Cove Luminaire

Perifina Wall Reveal Installation steps

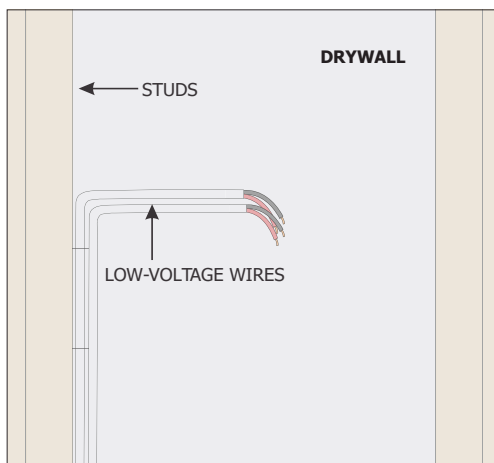
01.

Position the 24V DC Class 2 power supply in a suitable location within 30 feet of the desired fixture location.

NOTE: Longer distances are acceptable when using a thicker 12 AWG wire.

02.

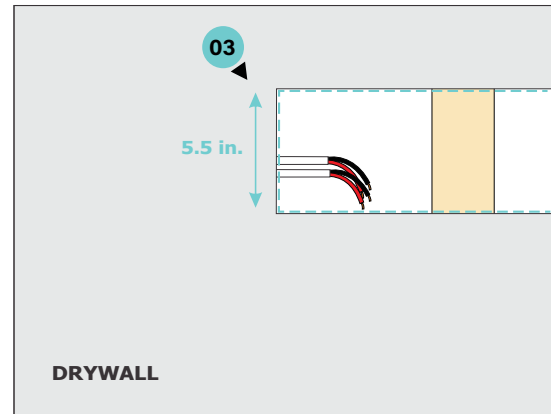
Bring 24V low-voltage in-wall rated wires to the desired fixture location.



03.

Cut a 5.5 in. opening in the drywall where you would like to mount Perifina.

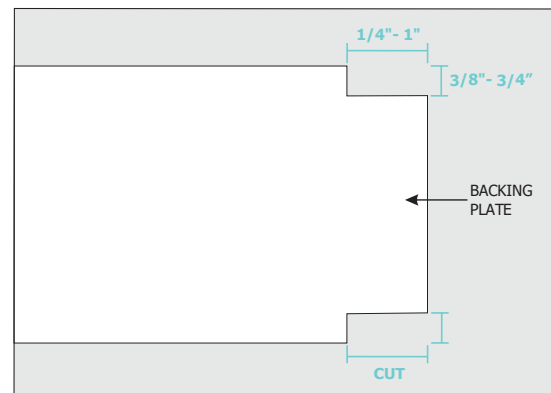
NOTE: For a bigger back plate cut a 6.5 in. opening. Mark the location of the studs on the drywall for future reference.



NOTE: It may be necessary to remove material from the backing plate or channel to run the power to the fixture.

04.

Use an appropriate tool to make a cutout to the required dimension on the backing plate.

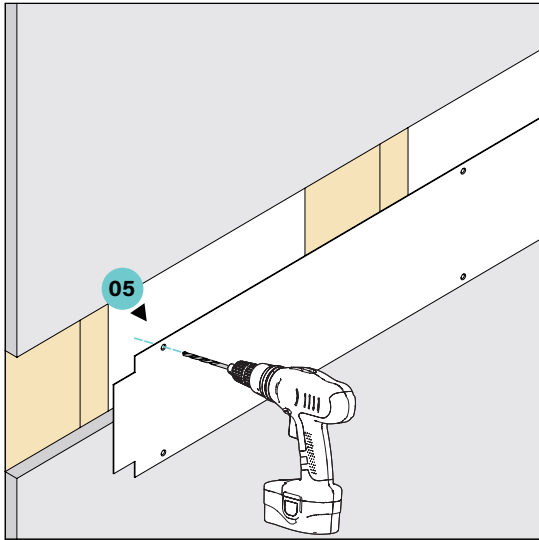


05.

Using the marked studs on the drywall, drill holes into the backing plate.

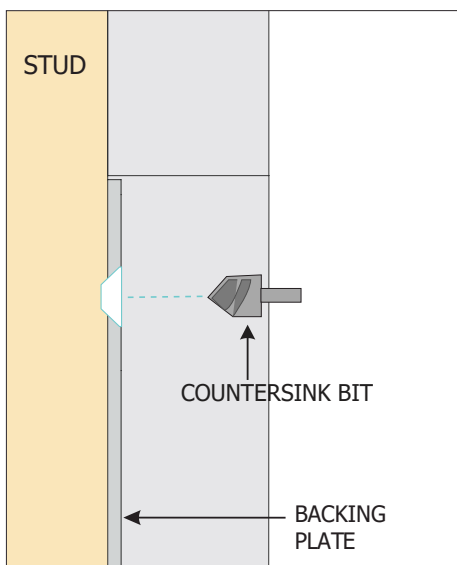
Perifina Wall Reveal 3 & 4 in.

Recessed Mud-In Wall Cove Luminaire



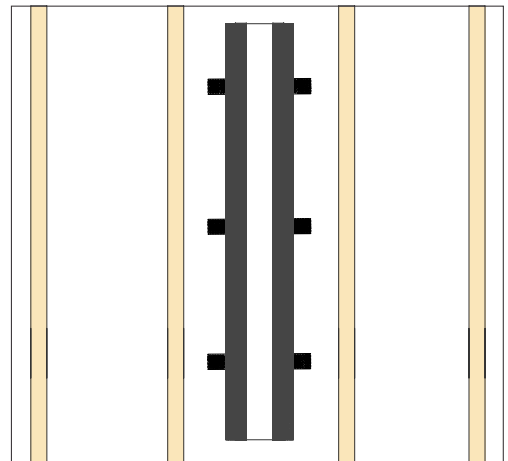
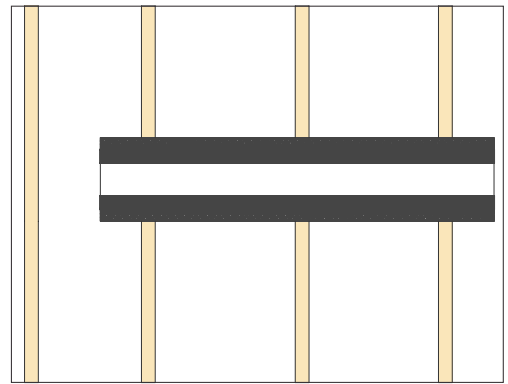
06.

With the countersink bit, create countersunk holes in the pre-drilled ones along the backing plate.



07.

For areas without studs, use mounting strips behind drywall as supports, or install 4-inch x 2-inch cross brace supports as needed. (suggested spacing is 24 inch)



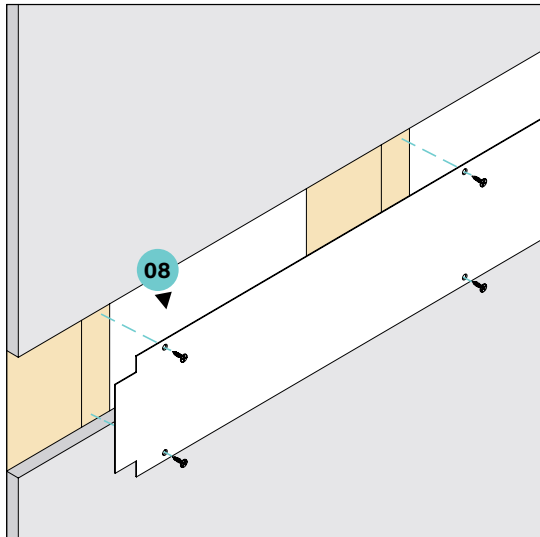
08.

Secure the backing plate to the studs or mounting strips using the drywall screws through the countersunk holes.

- a. Paint and finish the backing plate and screws.

Perifina Wall Reveal 3 & 4 in.

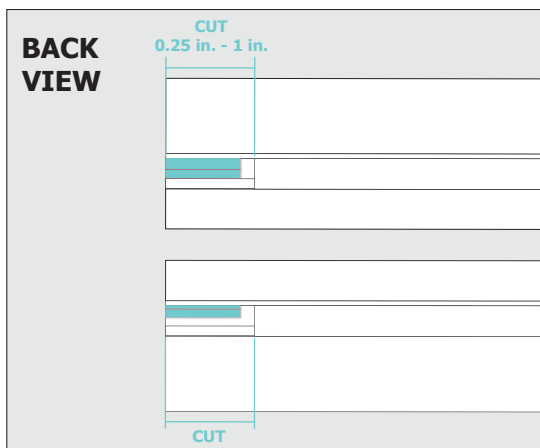
Recessed Mud-In Wall Cove Luminaire



NOTE: It may be necessary to remove material from the backing plate or channel to run the power to the fixture.

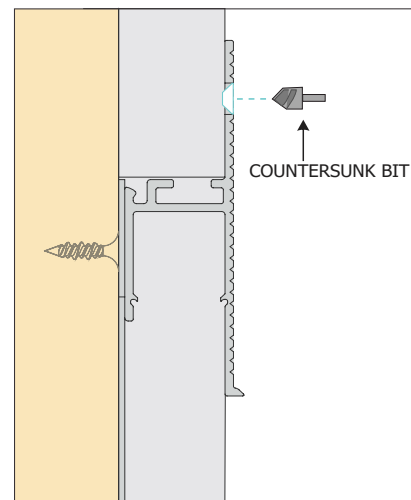
09.

Use an appropriate tool to cut away a 0.25-inch to 1-inch section of the channel, matching the backing plate cutout.



10.

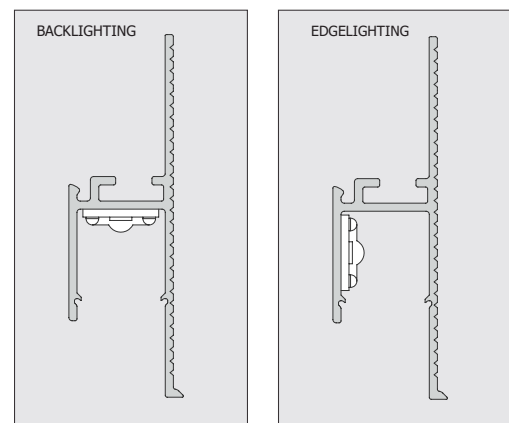
Carefully make holes in Perifina using the countersink drill bit along the fixture.



11.

Remove the adhesive backing from the tape light and stick the tape to the inside edges of the fixture.

NOTE: For an installation with bevel corners place the tapelight as the edgelighting option.

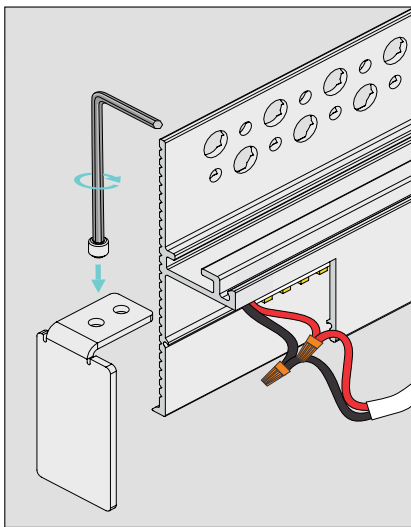


Perifina Wall Reveal 3 & 4 in.

Recessed Mud-In Wall Cove Luminaire

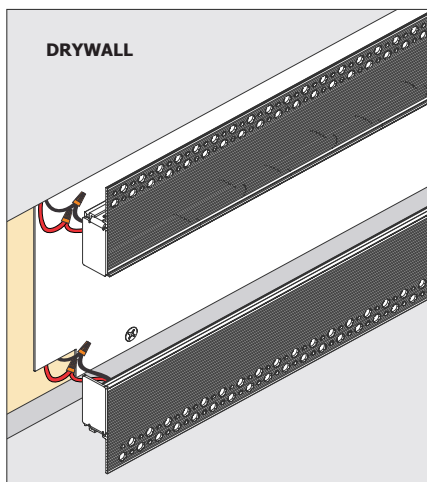
12.

Connect tapelight lead to low-voltage in-wall rated wire. Red is positive (+) and black is negative (-).



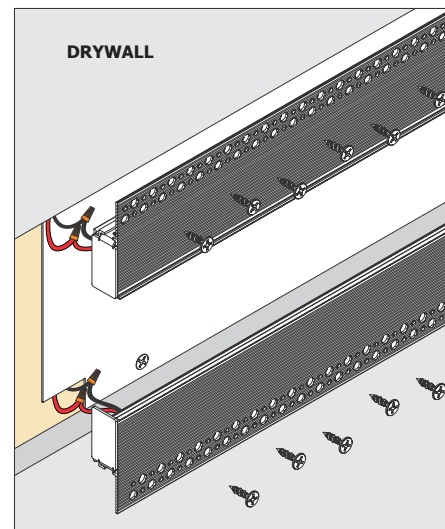
13.

Pass the connected low-voltage wires through the opening in the backing plate.



14.

Secure the fixture to the drywall using the drywall screws. The suggested screw spacing is 4 inches.



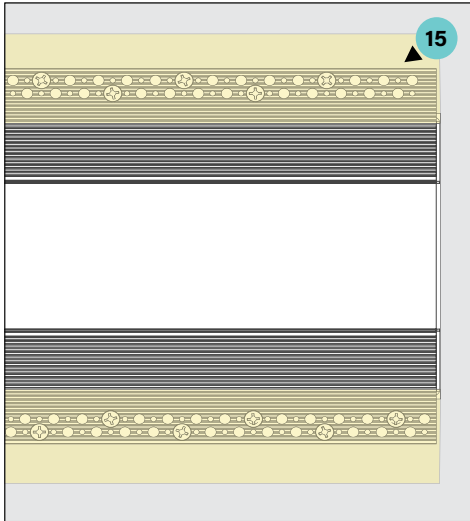
NOTE: Cover the fixture inside with painter's tape before plastering to prevent plaster and dust entering inside the fixture.

15.

Apply drywall tape along the edges of the fixture to prevent cracking of plaster after installation.

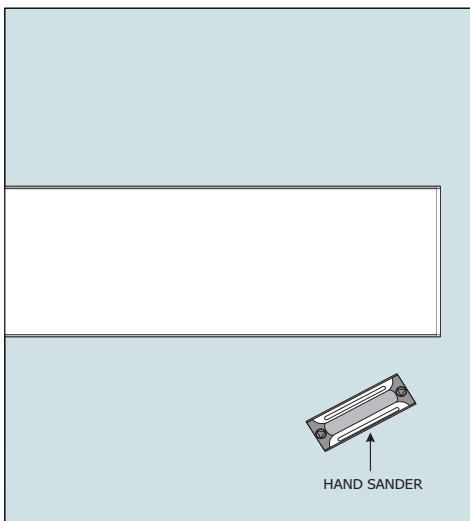
Perifina Wall Reveal 3 & 4 in.

Recessed Mud-In Wall Cove Luminaire



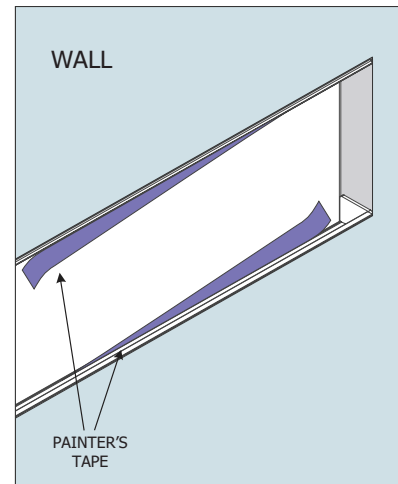
16.

Plaster the edges of the fixture flange to the wall and fill the screw holes. Finish the wall.



17.

Remove the painter's tape and clean if necessary.



18.

Affix the lens by gently snapping into place. Ensure it is fully seated.

