

Orbita Sconce Nano Linear Fixture

Specification Submittal

Orbita Sconce I & II provides an elegant, minimalist look that features field-adjustable light distribution. Perfect for many home lighting or commercial lighting applications.

Project Name:

Project Location:

Fixture Type:

SKUs:

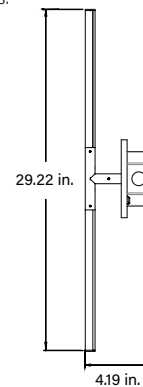
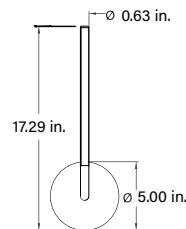


Features & Benefits

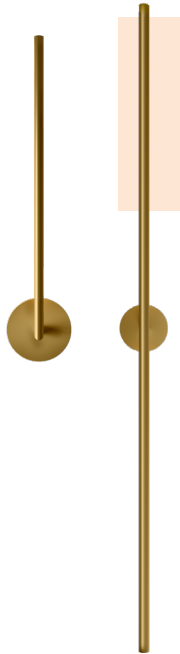
- Offered with one or two light engines and multiple lengths
- 360° light rotation to effortlessly fine-tune the direction of the light
- Superior color rendering
- High R9 and R13 values
- 2-step MacAdam ellipse for unparalleled quality and consistency
- UL Listed and Title 24

Dimensions




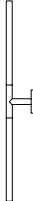
See next page for more details.



NOTE: Shown using 12 in. light engines
ø = diameter



System Builder Choose one option for each step.

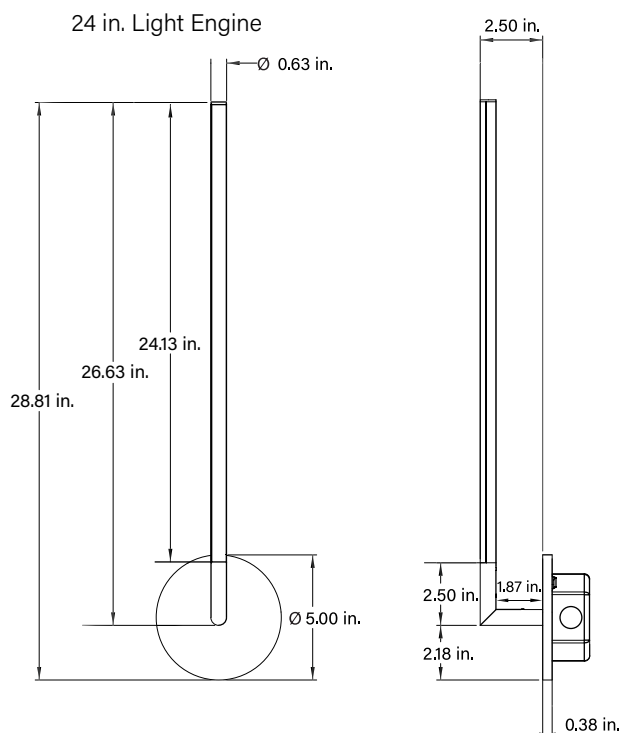
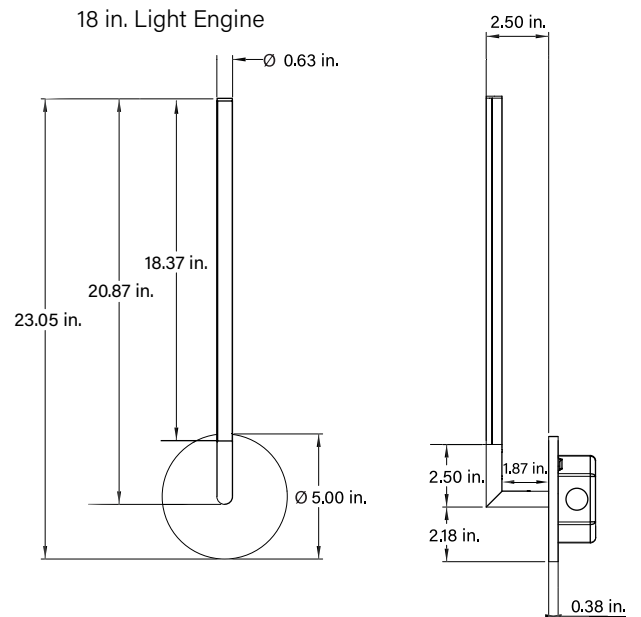
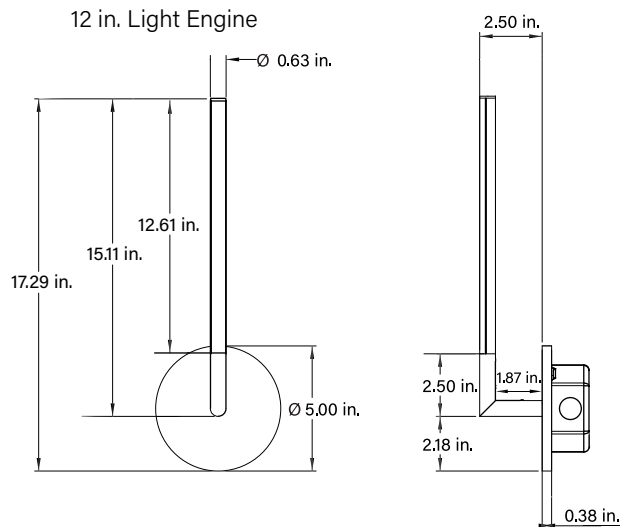
Prefix	Configuration	Output	CCT	Canopy	Finish	Length
OP-SFU-ORBITA-		L3				
	VERT Vertical sconce with a single light engine. 	L3 2700K - 201 lm/ft (4W) 3000K - 210 lm/ft (4W) 3500K - 225 lm/ft (4W) 4200K - 236 lm/ft (4W)	2700K 3000K 3500K 4200K	275 2.75 in. Diameter canopy For mounting directly to the wall (No junction box) 500 5 in. Diameter canopy For mounting with the use of a junction box 500D 5 in. Diameter canopy For mounting with an included Driver that fits most 4-inch junction box.	 STB Satin Brass  MBL Powder Coated Matte Black RAL 9005	12 12.61 in. light engine Lumen output: 263 per segment 18 18.37 in. light engine Lumen output: 394 per segment 24 24.13 in. light engine Lumen output: 525 per segment - Total length is limited to 10 ft. (120 in.) - If fixture has more than one section, it will use the chosen length for each section
	VER-HOR2 Vertical sconce with two light engines. 					

Orbita Sconce Nano Linear Fixture

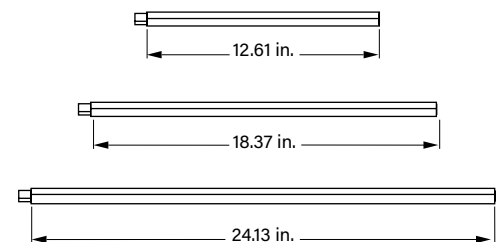
Specification Submittal

✂ Dimensions

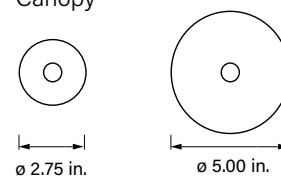
Sconce I - VERT



Light Engines



Canopy



NOTE: Ø = diameter

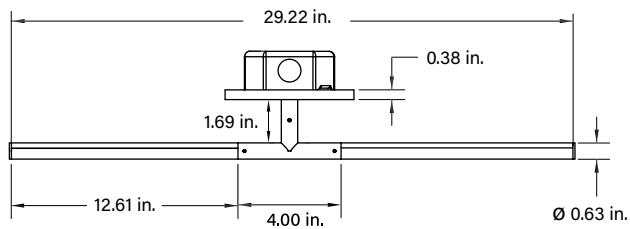
Orbita Sconce Nano Linear Fixture

Specification Submittal

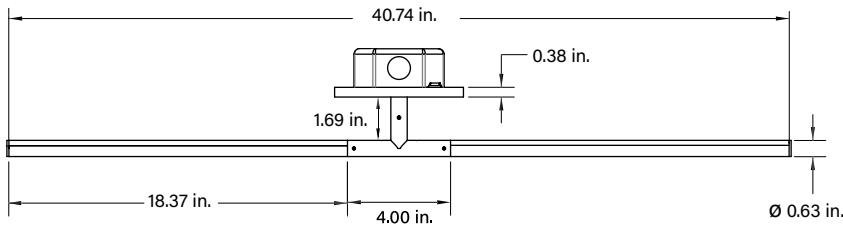
✕ Dimensions

Sconce II - VERT-HOR2

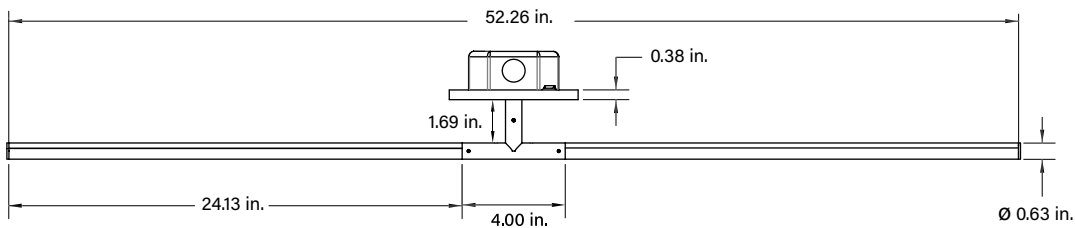
12 in. Light Engine



18 in. Light Engine



24 in. Light Engine



NOTE: \varnothing = diameter

Orbita Sconce

Nano Linear Fixture

Specification Submittal

Power Supply

Features

- Input Voltage: 90-130VAC / 180-240VAC
- High Efficiency: up to 89% ; PF>0.95
- Suitable for dry or damp location use.
- Compatible with 0-10V and 1-10V Dimmers.

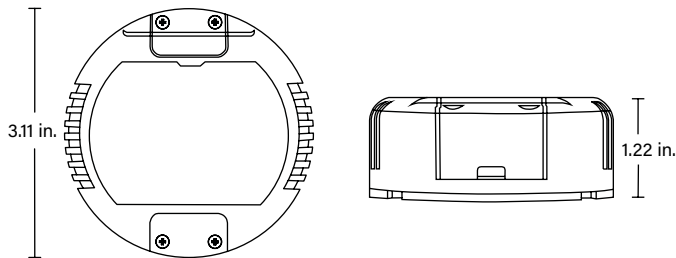
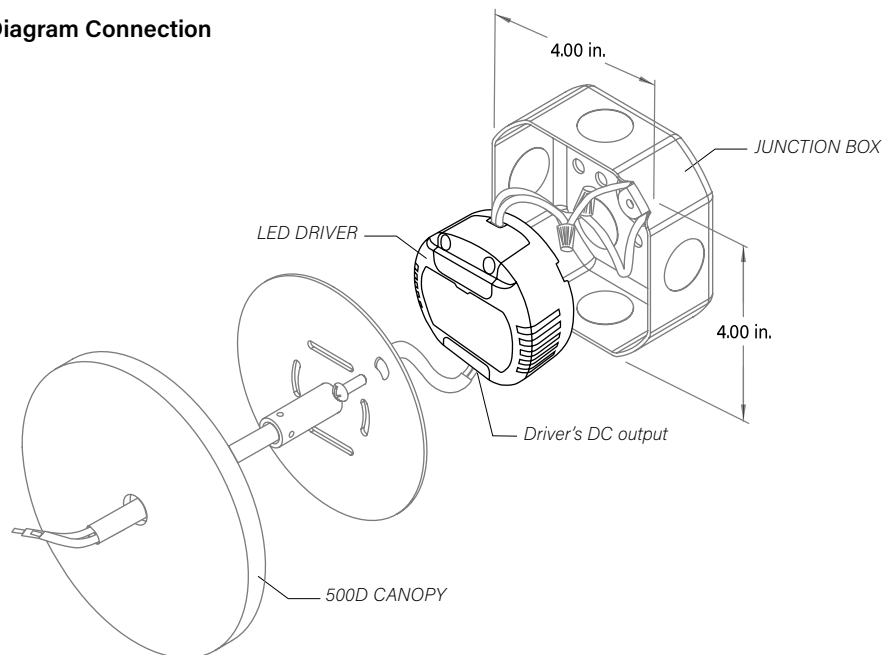


Diagram Connection



*Note: If Canopy 275 or 500 is selected, Optique Lighting will specify a universal remote driver that supports 120-277.

Orbita Sconce

Nano Linear Fixture

Specification Submittal

✦ Photometry

1 ft., 3000K Orbita Nano Linear Fixture

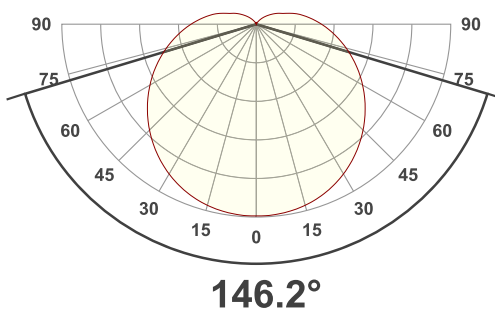
LUMEN SUMMARY

Zone	Lumens	% Fixture
0° - 15°	9.13 lm	4.35%
0° - 30°	34.6 lm	16.48%
0° - 45°	70.7 lm	33.67%
0° - 60°	110 lm	52.38%
0° - 75°	147 lm	70.00%
0° - 90°	175 lm	83.33%

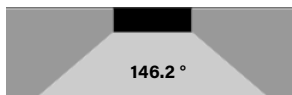
FOOT CANDLES

Distance	Foot Candles
1'	43 fcd
1.5'	19 fcd
2'	11 fcd
2.5'	7 fcd
3'	5 fcd
4'	3 fcd
5'	2 fcd
6'	1 fcd
9'	1 fcd
12'	0 fcd

ANGULAR DISTRIBUTION 0 - 90°

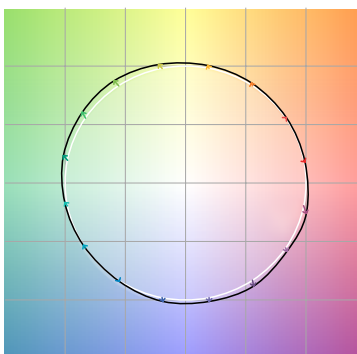


BEAM ANGLE



COLOR VECTOR GRAPHIC

		Graphic shifts (%)	
Hue Bin	R _f	Chroma	Hue
1	96	1%	-2%
2	98	1%	0%
3	95	1%	2%
4	95	2%	2%
5	95	4%	2%
6	92	6%	1%
7	92	5%	-3%
8	92	4%	-3%
9	94	2%	-3%
10	95	0%	-3%
11	96	0%	1%
12	94	3%	1%
13	96	3%	0%
14	94	5%	-2%
15	95	2%	-2%
16	92	3%	-6%



Reference Test